

## Product datasheet for **TA362559**

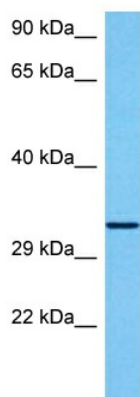
### XRCC4 Rabbit Polyclonal Antibody

#### Product data:

|                         |   |
|-------------------------|---|
| Product Type:           | Primary Antibodies  |
| Applications:           | WB  |
| Reactivity:             | Human   |
| Host:                   | Rabbit  |
| Clonality:              | Polyclonal  |
| Immunogen:              | The immunogen is a synthetic peptide directed towards the middle region of human XRCC4  |
| Specificity:            | <b>Expected reactivity:</b> Human   |
| Formulation:            | Liquid. Purified antibody supplied in 1x PBS buffer with 0.09% (w/v) sodium azide and 2% sucrose.<br><i>Note that this product is shipped as lyophilized powder to China customers.</i>   |
| Concentration:          | lot specific  |
| Purification:           | Affinity purified   |
| Conjugation:            | Unconjugated  |
| Storage:                | For short term use, store at 2-8°C up to 1 week. For long term storage, store at -20°C in small aliquots to prevent freeze-thaw cycles.   |
| Stability:              | Shelf life: one year from despatch.   |
| Predicted Protein Size: | 34 kDa  |
| Gene Name:              | X-ray repair complementing defective repair in Chinese hamster cells 4  |
| Database Link:          | <a href="#">NP_001304941.1</a><br><a href="#">Entrez Gene 7518 Human</a><br><a href="#">Q13426-3</a>  |
| Background:             | The protein encoded by this gene functions together with DNA ligase IV and the DNA-dependent protein kinase in the repair of DNA double-strand breaks. This protein plays a role in both non-homologous end joining and the completion of V(D)J recombination. Mutations in this gene can cause short stature, microcephaly, and endocrine dysfunction (SSMED). Alternative splicing generates several transcript variants. |
| Synonyms:               | XRCC4   |



[View online »](#)

**Product images:**

Host: Rabbit  
Target Name: XRCC4  
Sample Type: LN18 Cell Lysate  
Antibody Dilution: 1.0 $\mu$ g/ml

Host: Rabbit  
Target Name: XRCC4  
Sample Tissue: Human LN18 Whole Cell lysates  
Antibody Dilution: 1 ug/ml