

Product datasheet for **TA362558**

Heparanase 1 (HPSE) Rabbit Polyclonal Antibody

Product data:

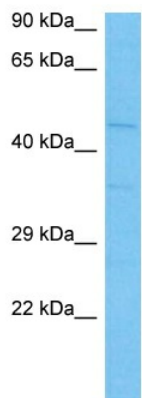
Product Type:	Primary Antibodies
Applications:	WB
Reactivity:	Human
Host:	Rabbit
Clonality:	Polyclonal
Immunogen:	The immunogen is a synthetic peptide directed towards the middle region of human HPSE
Specificity:	Expected reactivity: Human
Formulation:	Liquid. Purified antibody supplied in 1x PBS buffer with 0.09% (w/v) sodium azide and 2% sucrose. <i>Note that this product is shipped as lyophilized powder to China customers.</i>
Concentration:	lot specific
Purification:	Affinity purified
Conjugation:	Unconjugated
Storage:	For short term use, store at 2-8°C up to 1 week. For long term storage, store at -20°C in small aliquots to prevent freeze-thaw cycles.
Stability:	Shelf life: one year from despatch.
Predicted Protein Size:	51 kDa
Gene Name:	heparanase
Database Link:	NP_001092010.1 Entrez Gene 10855 Human Q9Y251-3
Background:	Heparan sulfate proteoglycans are major components of the basement membrane and extracellular matrix. The protein encoded by this gene is an enzyme that cleaves heparan sulfate proteoglycans to permit cell movement through remodeling of the extracellular matrix. In addition, this cleavage can release bioactive molecules from the extracellular matrix. Several transcript variants encoding different isoforms have been found for this gene.
Synonyms:	Endo-glucuronidase; HEP; heparanase; heparanase-1; HPA; Hpa1; HPR1; HPSE1; HSE1
Protein Families:	Secreted Protein



[View online »](#)

Protein Pathways: Glycosaminoglycan degradation, Metabolic pathways

Product images:



Host: Rabbit
 Target Name: HPSE
 Sample Type: PC-3 Cell Lysate
 Antibody Dilution: 1.0µg/ml

Host: Rabbit
 Target Name: HPSE
 Sample Tissue: Human PC-3 Whole Cell lysates
 Antibody Dilution: 1ug/ml