

## Product datasheet for **TA362540**

### **Ku80 (XRCC5) Rabbit Polyclonal Antibody**

#### **Product data:**

Product Type:	Primary Antibodies
Applications:	WB
Reactivity:	Human
Host:	Rabbit
Clonality:	Polyclonal
Immunogen:	The immunogen is a synthetic peptide directed towards the middle region of human XRCC5
Specificity:	<b>Expected reactivity:</b> Human
Formulation:	Liquid. Purified antibody supplied in 1x PBS buffer with 0.09% (w/v) sodium azide and 2% sucrose. <i>Note that this product is shipped as lyophilized powder to China customers.</i>
Concentration:	lot specific
Purification:	Affinity purified
Conjugation:	Unconjugated
Storage:	For short term use, store at 2-8°C up to 1 week. For long term storage, store at -20°C in small aliquots to prevent freeze-thaw cycles.
Stability:	Shelf life: one year from despatch.
Predicted Protein Size:	80 kDa
Gene Name:	X-ray repair complementing defective repair in Chinese hamster cells 5
Database Link:	<a href="#">NP_066964.1</a> <a href="#">Entrez Gene 7520 Human</a> <a href="#">P13010</a>



[View online »](#)

**Background:**

The protein encoded by this gene is the 80-kilodalton subunit of the Ku heterodimer protein which is also known as ATP-dependant DNA helicase II or DNA repair protein XRCC5. Ku is the DNA-binding component of the DNA-dependent protein kinase, and it functions together with the DNA ligase IV-XRCC4 complex in the repair of DNA double-strand break by non-homologous end joining and the completion of V(D)J recombination events. This gene functionally complements Chinese hamster xrs-6, a mutant defective in DNA double-strand break repair and in ability to undergo V(D)J recombination. A rare microsatellite polymorphism in this gene is associated with cancer in patients of varying radiosensitivity.

**Synonyms:**

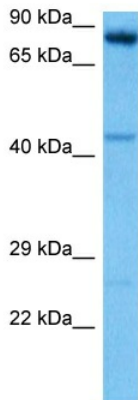
CTC85; CTCBF; FLJ39089; G22P2; KARP-1; KARP1; Ku80; Ku86; KUB2; NFIV; OTTHUMP00000164061; OTTHUMP00000206791; TLAA

**Protein Families:**

Druggable Genome, Stem cell - Pluripotency

**Protein Pathways:**

Non-homologous end-joining

**Product images:**


Host: Rabbit  
 Target Name: XRCC5  
 Sample Type: OVCAR-3 Cell Lysate  
 Antibody Dilution: 1.0µg/ml

Host: Rabbit  
 Target Name: XRCC5  
 Sample Tissue: Human OVCAR-3 Whole Cell lysates  
 Antibody Dilution: 1ug/ml