

Product datasheet for **TA362539**

MKLP1 (KIF23) Rabbit Polyclonal Antibody

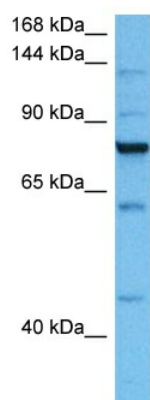
Product data:

Product Type:	Primary Antibodies
Applications:	WB
Reactivity:	Human
Host:	Rabbit
Clonality:	Polyclonal
Immunogen:	The immunogen is a synthetic peptide directed towards the middle region of human KIF23
Specificity:	Expected reactivity: Human
Formulation:	Liquid. Purified antibody supplied in 1x PBS buffer with 0.09% (w/v) sodium azide and 2% sucrose. <i>Note that this product is shipped as lyophilized powder to China customers.</i>
Concentration:	lot specific
Purification:	Affinity purified
Conjugation:	Unconjugated
Storage:	For short term use, store at 2-8°C up to 1 week. For long term storage, store at -20°C in small aliquots to prevent freeze-thaw cycles.
Stability:	Shelf life: one year from despatch.
Predicted Protein Size:	77 kDa
Gene Name:	kinesin family member 23
Database Link:	NP_004847.2 Entrez Gene 9493 Human Q02241-3
Background:	The protein encoded by this gene is a member of kinesin-like protein family. This family includes microtubule-dependent molecular motors that transport organelles within cells and move chromosomes during cell division. This protein has been shown to cross-bridge antiparallel microtubules and drive microtubule movement in vitro. Alternate splicing of this gene results in multiple transcript variants.
Synonyms:	CHO1; KNSL5; MKLP-1; MKLP1
Protein Families:	Druggable Genome



[View online »](#)

Product images:



Host: Rabbit
Target Name: KIF23
Sample Type: HepG2 Cell Lysate
Antibody Dilution: 1.0 μ g/ml

Host: Rabbit
Target Name: KIF23
Sample Tissue: Human HepG2 Whole Cell lysates
Antibody Dilution: 1 μ g/ml