

## Product datasheet for **TA362513**

### **HNF1 alpha (HNF1A) Rabbit Polyclonal Antibody**

#### **Product data:**

Product Type:	Primary Antibodies
Applications:	WB
Reactivity:	Human
Host:	Rabbit
Clonality:	Polyclonal
Immunogen:	The immunogen is a synthetic peptide directed towards the middle region of human HNF1A
Specificity:	<b>Expected reactivity:</b> Human
Formulation:	Liquid. Purified antibody supplied in 1x PBS buffer with 0.09% (w/v) sodium azide and 2% sucrose. <i>Note that this product is shipped as lyophilized powder to China customers.</i>
Concentration:	lot specific
Purification:	Affinity purified
Conjugation:	Unconjugated
Storage:	For short term use, store at 2-8°C up to 1 week. For long term storage, store at -20°C in small aliquots to prevent freeze-thaw cycles.
Stability:	Shelf life: one year from despatch.
Predicted Protein Size:	57 kDa
Gene Name:	HNF1 homeobox A
Database Link:	<a href="#">NP_000536.5</a> <a href="#">Entrez Gene 6927 Human</a> <a href="#">P20823-3</a>
Background:	The protein encoded by this gene is a transcription factor required for the expression of several liver-specific genes. The encoded protein functions as a homodimer and binds to the inverted palindrome 5'-GTTAATNATTAAC-3'. Defects in this gene are a cause of maturity onset diabetes of the young type 3 (MODY3) and also can result in the appearance of hepatic adenomas. Alternative splicing results in multiple transcript variants encoding different isoforms.
Synonyms:	HNF-1A; HNF1; LFB1; MODY3; TCF-1; TCF1

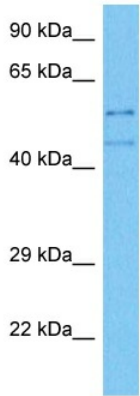


[View online »](#)

**Protein Families:** Adult stem cells, Druggable Genome, ES Cell Differentiation/IPS, Transcription Factors

**Protein Pathways:** Maturity onset diabetes of the young

## Product images:



Host: Rabbit  
Target Name: HNF1A  
Sample Type: MCF7 Cell Lysate  
Antibody Dilution: 1.0 $\mu$ g/ml

Host: Rabbit  
Target Name: HNF1A  
Sample Tissue: Human MCF7 Whole Cell lysates  
Antibody Dilution: 1 $\mu$ g/ml