

Product datasheet for **TA362509**

FRS2 Rabbit Polyclonal Antibody

Product data:

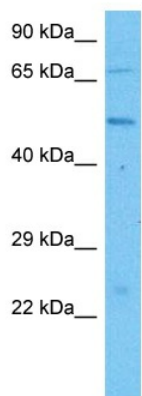
Product Type:	Primary Antibodies
Applications:	WB
Reactivity:	Human
Host:	Rabbit
Clonality:	Polyclonal
Immunogen:	The immunogen is a synthetic peptide directed towards the middle region of human FRS2
Specificity:	Expected reactivity: Human
Formulation:	Liquid. Purified antibody supplied in 1x PBS buffer with 0.09% (w/v) sodium azide and 2% sucrose. <i>Note that this product is shipped as lyophilized powder to China customers.</i>
Concentration:	lot specific
Purification:	Affinity purified
Conjugation:	Unconjugated
Storage:	For short term use, store at 2-8°C up to 1 week. For long term storage, store at -20°C in small aliquots to prevent freeze-thaw cycles.
Stability:	Shelf life: one year from despatch.
Predicted Protein Size:	55 kDa
Gene Name:	fibroblast growth factor receptor substrate 2
Database Link:	NP_001036020.1 Entrez Gene 10818 Human Q8WU20
Background:	Adapter protein that links activated FGR and NGF receptors to downstream signaling pathways. Plays an important role in the activation of MAP kinases and in the phosphorylation of PIK3R1, the regulatory subunit of phosphatidylinositol 3-kinase, in response to ligand-mediated activation of FGFR1. Modulates signaling via SHC1 by competing for a common binding site on NTRK1.
Synonyms:	FRS2A; FRS2alpha; SNT; SNT-1; SNT1
Protein Families:	Druggable Genome



[View online »](#)

Protein Pathways: Neurotrophin signaling pathway

Product images:



Host: Rabbit
Target Name: FRS2
Sample Type: A172 Cell Lysate
Antibody Dilution: 1.0 μ g/ml

Host: Rabbit
Target Name: FRS2
Sample Tissue: Human A172 Whole Cell lysates
Antibody Dilution: 1 μ g/ml