

Product datasheet for **TA362506**

TIAL1 Rabbit Polyclonal Antibody

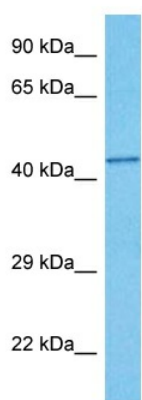
Product data:

Product Type:	Primary Antibodies
Applications:	WB
Reactivity:	Human
Host:	Rabbit
Clonality:	Polyclonal
Immunogen:	The immunogen is a synthetic peptide directed towards the middle region of human TIAL1
Specificity:	Expected reactivity: Human
Formulation:	Liquid. Purified antibody supplied in 1x PBS buffer with 0.09% (w/v) sodium azide and 2% sucrose.
Concentration:	lot specific
Purification:	Affinity purified
Conjugation:	Unconjugated
Storage:	For short term use, store at 2-8°C up to 1 week. For long term storage, store at -20°C in small aliquots to prevent freeze-thaw cycles.
Stability:	Shelf life: one year from despatch.
Predicted Protein Size:	41 kDa
Gene Name:	TIA1 cytotoxic granule-associated RNA binding protein-like 1
Database Link:	NP_001029097.1 Entrez Gene 7073 Human P31483-2
Background:	The protein encoded by this gene is a member of a family of RNA-binding proteins, has three RNA recognition motifs (RRMs), and binds adenine and uridine-rich elements in mRNA and pre-mRNAs of a wide range of genes. It regulates various activities including translational control, splicing and apoptosis. Alternate transcriptional splice variants, encoding different isoforms, have been characterized. The different isoforms have been shown to function differently with respect to post-transcriptional silencing.
Synonyms:	MGC33401; TCBP; TIAR
Protein Families:	Druggable Genome, Transcription Factors



[View online »](#)

Product images:



Host: Rabbit
Target Name: TIAL1
Sample Type: PANC1 Cell Lysate
Antibody Dilution: 1.0 μ g/ml

Host: Rabbit
Target Name: TIAL1
Sample Tissue: Human PANC1 Whole Cell lysates
Antibody Dilution: 1 μ g/ml