

Product datasheet for **TA362496**

YY1 Rabbit Polyclonal Antibody

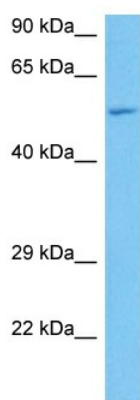
Product data:

Product Type:	Primary Antibodies
Applications:	WB
Reactivity:	Human
Host:	Rabbit
Clonality:	Polyclonal
Immunogen:	The immunogen is a synthetic peptide directed towards the middle region of human YY1
Specificity:	Expected reactivity: Human
Formulation:	Liquid. Purified antibody supplied in 1x PBS buffer with 0.09% (w/v) sodium azide and 2% sucrose. <i>Note that this product is shipped as lyophilized powder to China customers.</i>
Concentration:	lot specific
Purification:	Affinity purified
Conjugation:	Unconjugated
Storage:	For short term use, store at 2-8°C up to 1 week. For long term storage, store at -20°C in small aliquots to prevent freeze-thaw cycles.
Stability:	Shelf life: one year from despatch.
Predicted Protein Size:	45 kDa
Gene Name:	YY1 transcription factor
Database Link:	NP_003394.1 Entrez Gene 7528 Human P25490
Background:	YY1 is a ubiquitously distributed transcription factor belonging to the GLI-Kruppel class of zinc finger proteins. The protein is involved in repressing and activating a diverse number of promoters. YY1 may direct histone deacetylases and histone acetyltransferases to a promoter in order to activate or repress the promoter, thus implicating histone modification in the function of YY1.
Synonyms:	DELTA; INO80S; NF-E1; UCRBP; YIN-YANG-1; YY-1
Protein Families:	Druggable Genome, Transcription Factors



[View online »](#)

Product images:



Host: Rabbit
Target Name: YY1
Sample Type: RPMI 8226 Cell Lysate
Antibody Dilution: 1.0 μ g/ml

Host: Rabbit
Target Name: YY1
Sample Tissue: Human RPMI 8226 Whole Cell lysates
Antibody Dilution: 1 μ g/ml