

Product datasheet for **TA362493**

GTF2A1 Rabbit Polyclonal Antibody

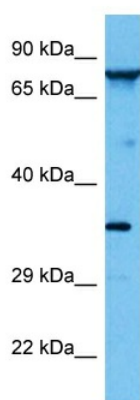
Product data:

Product Type:	Primary Antibodies
Applications:	WB
Reactivity:	Human
Host:	Rabbit
Clonality:	Polyclonal
Immunogen:	The immunogen is a synthetic peptide directed towards the middle region of Human GTF2A1
Specificity:	Expected reactivity: Human
Formulation:	Liquid. Purified antibody supplied in 1x PBS buffer with 0.09% (w/v) sodium azide and 2% sucrose. <i>Note that this product is shipped as lyophilized powder to China customers.</i>
Concentration:	lot specific
Purification:	Affinity purified
Conjugation:	Unconjugated
Storage:	For short term use, store at 2-8°C up to 1 week. For long term storage, store at -20°C in small aliquots to prevent freeze-thaw cycles.
Stability:	Shelf life: one year from despatch.
Predicted Protein Size:	37 kDa
Gene Name:	general transcription factor IIA subunit 1
Database Link:	NP_001265869.1 Entrez Gene 2957 Human P52655-2
Background:	Accurate transcription initiation on TATA-containing class II genes involves the ordered assembly of RNA polymerase I and several general initiation factors). One of these factors is TFIIA, which when purified from HeLa extracts consists of 35-, 19-, and 12-kD subunits.
Synonyms:	MGC129969; MGC129970; TF2A1; TFIIA; TFIIA-42; TFIIAL
Protein Families:	Transcription Factors
Protein Pathways:	Basal transcription factors



[View online »](#)

Product images:



Host: Rabbit
Target Name: GTF2A1
Sample Type: MCF7 Cell Lysate
Antibody Dilution: 1.0 μ g/ml

Host: Rabbit
Target Name: GTF2A1
Sample Tissue: Human MCF7 Whole Cell lysates
Antibody Dilution: 1 μ g/ml