

Product datasheet for **TA362489**

Cyclin A2 (CCNA2) Rabbit Polyclonal Antibody

Product data:

Product Type:	Primary Antibodies
Applications:	WB
Reactivity:	Human
Host:	Rabbit
Clonality:	Polyclonal
Immunogen:	The immunogen is a synthetic peptide directed towards the N terminal region of Human CCNA2
Specificity:	Expected reactivity: Human
Formulation:	Liquid. Purified antibody supplied in 1x PBS buffer with 0.09% (w/v) sodium azide and 2% sucrose. <i>Note that this product is shipped as lyophilized powder to China customers.</i>
Concentration:	lot specific
Purification:	Affinity purified
Conjugation:	Unconjugated
Storage:	For short term use, store at 2-8°C up to 1 week. For long term storage, store at -20°C in small aliquots to prevent freeze-thaw cycles.
Stability:	Shelf life: one year from despatch.
Predicted Protein Size:	49 kDa
Gene Name:	cyclin A2
Database Link:	NP_001228.1 Entrez Gene 890 Human P20248



[View online »](#)

Background:

The protein encoded by this gene belongs to the highly conserved cyclin family, whose members are characterized by a dramatic periodicity in protein abundance through the cell cycle. Cyclins function as regulators of CDK kinases. Different cyclins exhibit distinct expression and degradation patterns which contribute to the temporal coordination of each mitotic event. In contrast to cyclin A1, which is present only in germ cells, this cyclin is expressed in all tissues tested. This cyclin binds and activates CDC2 or CDK2 kinases, and thus promotes both cell cycle G1/S and G2/M transitions.

Synonyms:

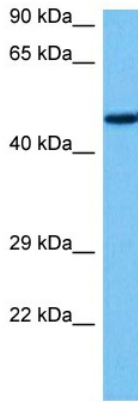
CCN1; CCNA; Cyclin-A

Protein Families:

Druggable Genome, Stem cell - Pluripotency

Protein Pathways:

Cell cycle, Progesterone-mediated oocyte maturation

Product images:

Host: Rabbit
Target Name: CCNA2
Sample Type: HepG2 Cell Lysate
Antibody Dilution: 1.0µg/ml

Host: Rabbit
Target Name: CCNA2
Sample Tissue: Human HepG2 Whole Cell lysates
Antibody Dilution: 1ug/ml