

Product datasheet for **TA362476**

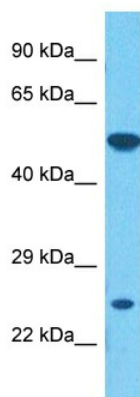
RUSF1 Rabbit Polyclonal Antibody

Product data:

Product Type:	Primary Antibodies
Applications:	WB
Reactivity:	Human
Host:	Rabbit
Clonality:	Polyclonal
Immunogen:	The immunogen is a synthetic peptide directed towards the middle region of human C16ORF58
Specificity:	Expected reactivity: Human
Formulation:	Liquid. Purified antibody supplied in 1x PBS buffer with 0.09% (w/v) sodium azide and 2% sucrose.
Concentration:	lot specific
Purification:	Affinity purified
Conjugation:	Unconjugated
Storage:	For short term use, store at 2-8°C up to 1 week. For long term storage, store at -20°C in small aliquots to prevent freeze-thaw cycles.
Stability:	Shelf life: one year from despatch.
Predicted Protein Size:	51 kDa
Gene Name:	chromosome 16 open reading frame 58
Database Link:	NP_073581.2 Entrez Gene 64755 Human Q96GQ5
Background:	This gene encodes a putative transmembrane protein containing a conserved DUF647 domain that may be involved in protein-protein interaction. The encoded protein is related to a plant protein that participates in ultraviolet B light-sensing during root morphogenesis.
Synonyms:	FLJ13868
Protein Families:	Transmembrane



[View online »](#)

Product images:


Host: Rabbit
 Target Name: C16orf58
 Sample Type: Jurkat Cell Lysate
 Antibody Dilution: 1.0µg/ml

Host: Rabbit
 Target Name: C16ORF58
 Sample Tissue: Human Jurkat Whole Cell lysates
 Antibody Dilution: 1ug/ml