

Product datasheet for **TA362474**

LDHAL6B Rabbit Polyclonal Antibody

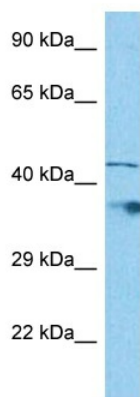
Product data:

Product Type:	Primary Antibodies
Applications:	WB
Reactivity:	Human
Host:	Rabbit
Clonality:	Polyclonal
Immunogen:	The immunogen is a synthetic peptide directed towards the middle region of human LDHAL6B
Specificity:	Expected reactivity: Human
Formulation:	Liquid. Purified antibody supplied in 1x PBS buffer with 0.09% (w/v) sodium azide and 2% sucrose.
Concentration:	lot specific
Purification:	Affinity purified
Conjugation:	Unconjugated
Storage:	For short term use, store at 2-8°C up to 1 week. For long term storage, store at -20°C in small aliquots to prevent freeze-thaw cycles.
Stability:	Shelf life: one year from despatch.
Predicted Protein Size:	41 kDa
Gene Name:	lactate dehydrogenase A like 6B
Database Link:	NP_149972.1 Entrez Gene 92483 Human Q9BYZ2
Background:	The function of this protein remains unknown.
Synonyms:	LDH6B; LDHAL6; LDHL
Protein Pathways:	Cysteine and methionine metabolism, Glycolysis / Gluconeogenesis, Metabolic pathways, Propanoate metabolism, Pyruvate metabolism



[View online »](#)

Product images:



Host: Rabbit
Target Name: LDHAL6B
Sample Type: OVCAR-3 Cell Lysate
Antibody Dilution: 1.0 μ g/ml

Host: Rabbit
Target Name: LDHAL6B
Sample Tissue: Human OVCAR-3 Whole Cell
lysates
Antibody Dilution: 1 ug/ml