

## Product datasheet for **TA362470**

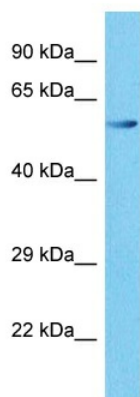
### QRSL1 Rabbit Polyclonal Antibody

#### Product data:

Product Type:	Primary Antibodies
Applications:	WB
Reactivity:	Human
Host:	Rabbit
Clonality:	Polyclonal
Immunogen:	The immunogen is a synthetic peptide directed towards the middle region of human QRSL1
Specificity:	<b>Expected reactivity:</b> Human
Formulation:	Liquid. Purified antibody supplied in 1x PBS buffer with 0.09% (w/v) sodium azide and 2% sucrose.
Concentration:	lot specific
Purification:	Affinity purified
Conjugation:	Unconjugated
Storage:	For short term use, store at 2-8°C up to 1 week. For long term storage, store at -20°C in small aliquots to prevent freeze-thaw cycles.
Stability:	Shelf life: one year from despatch.
Predicted Protein Size:	58 kDa
Gene Name:	glutaminyt-tRNA synthase (glutamine-hydrolyzing)-like 1
Database Link:	<a href="#">NP_060762.3</a> <a href="#">Entrez Gene 55278 Human</a> <a href="#">Q9H0R6</a>
Background:	Allows the formation of correctly charged Gln-tRNA(Gln) through the transamidation of misacylated Glu-tRNA(Gln) in the mitochondria. The reaction takes place in the presence of glutamine and ATP through an activated gamma-phospho-Glu-tRNA(Gln).
Synonyms:	DKFZP564C1278; FLJ10989; FLJ12189; FLJ13447; GatA

[View online »](#)

## Product images:



Host: Rabbit  
Target Name: QRSL1  
Sample Type: A549 Cell Lysate  
Antibody Dilution: 1.0µg/ml

Host: Rabbit  
Target Name: QRSL1  
Sample Tissue: Human A549 Whole Cell lysates  
Antibody Dilution: 1ug/ml