

Product datasheet for **TA362463**

SHCBP1L Rabbit Polyclonal Antibody

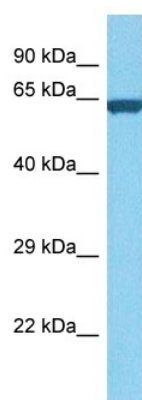
Product data:

Product Type:	Primary Antibodies
Applications:	WB
Reactivity:	Human
Host:	Rabbit
Clonality:	Polyclonal
Immunogen:	The immunogen is a synthetic peptide directed towards the middle region of human SHCBP1L
Specificity:	Expected reactivity: Human
Formulation:	Liquid. Purified antibody supplied in 1x PBS buffer with 0.09% (w/v) sodium azide and 2% sucrose.
Concentration:	lot specific
Purification:	Affinity purified
Conjugation:	Unconjugated
Storage:	For short term use, store at 2-8°C up to 1 week. For long term storage, store at -20°C in small aliquots to prevent freeze-thaw cycles.
Stability:	Shelf life: one year from despatch.
Predicted Protein Size:	60 kDa
Gene Name:	SHC binding and spindle associated 1 like
Database Link:	NP_112195.2 Entrez Gene 81626 Human Q9BZQ2-2
Background:	This gene encodes a Src homology 2 domain-binding protein 1-like protein. The encoded protein interacts with heat shock 70 kDa protein 2 and may be involved in maintaining spindle integrity during meiosis. This gene is located in region of chromosome 1 encompassing a prostate cancer susceptibility locus.
Synonyms:	C1orf14; GE36



[View online »](#)

Product images:



Host: Rabbit
Target Name: SHCBP1L
Sample Type: THP-1 Cell Lysate
Antibody Dilution: 1.0µg/ml

Host: Rabbit
Target Name: SHCBP1L
Sample Tissue: Human THP-1 Whole Cell lysates
Antibody Dilution: 1ug/ml