

Product datasheet for **TA362460**

DOLPP1 Rabbit Polyclonal Antibody

Product data:

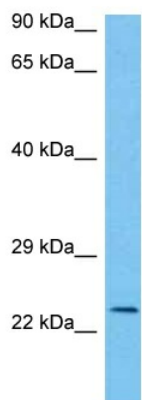
Product Type:	Primary Antibodies
Applications:	WB
Reactivity:	Human
Host:	Rabbit
Clonality:	Polyclonal
Immunogen:	The immunogen is a synthetic peptide directed towards the C terminal region of human DOLPP1
Specificity:	Expected reactivity: Human
Formulation:	Liquid. Purified antibody supplied in 1x PBS buffer with 0.09% (w/v) sodium azide and 2% sucrose. <i>Note that this product is shipped as lyophilized powder to China customers.</i>
Concentration:	lot specific
Purification:	Affinity purified
Conjugation:	Unconjugated
Storage:	For short term use, store at 2-8°C up to 1 week. For long term storage, store at -20°C in small aliquots to prevent freeze-thaw cycles.
Stability:	Shelf life: one year from despatch.
Predicted Protein Size:	22 kDa
Gene Name:	dolichyldiphosphatase 1
Database Link:	NP_001129389.1 Entrez Gene 57171 Human Q86YN1-2
Background:	A similar gene has been characterized in mice and encodes dolichyl pyrophosphate (Dol-P-P) phosphatase. This protein dephosphorylates dolichyl pyrophosphate so that it may be re-utilized as a glycosyl carrier lipid by the oligosaccharyltransferase multisubunit complex in the ER. Alternative splicing results in multiple transcript variants and protein isoforms.
Synonyms:	LSFR2
Protein Families:	Druggable Genome, Transmembrane



[View online »](#)

Protein Pathways: N-Glycan biosynthesis

Product images:



Host: Rabbit
Target Name: DOLPP1
Sample Type: Du145 Cell Lysate
Antibody Dilution: 1.0 μ g/ml

Host: Rabbit
Target Name: DOLPP1
Sample Tissue: Human Du145 Whole Cell lysates
Antibody Dilution: 1 μ g/ml