

## Product datasheet for **TA362454**

### SLC35A5 Rabbit Polyclonal Antibody

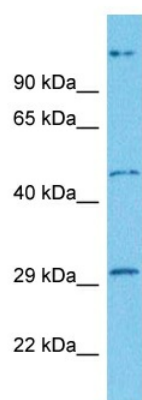
#### Product data:

Product Type:	Primary Antibodies
Applications:	WB
Reactivity:	Human
Host:	Rabbit
Clonality:	Polyclonal
Immunogen:	The immunogen is a synthetic peptide directed towards the C terminal region of human SLC35A5
Specificity:	<b>Expected reactivity:</b> Human
Formulation:	Liquid. Purified antibody supplied in 1x PBS buffer with 0.09% (w/v) sodium azide and 2% sucrose.
Concentration:	lot specific
Purification:	Affinity purified
Conjugation:	Unconjugated
Storage:	For short term use, store at 2-8°C up to 1 week. For long term storage, store at -20°C in small aliquots to prevent freeze-thaw cycles.
Stability:	Shelf life: one year from despatch.
Predicted Protein Size:	49 kDa
Gene Name:	solute carrier family 35 member A5
Database Link:	<a href="#">NP_060415.1</a> <a href="#">Entrez Gene 55032 Human</a> <a href="#">Q9BS91</a>
Background:	This gene encodes a transmembrane protein which belongs to subfamily 35A of the solute carrier superfamily. The encoded protein is a nucleoside-sugar transporter. Alternative splicing results in multiple transcript variants.Â
Synonyms:	DKFZp434E102; FLJ111130; FLJ20730; FLJ25973
Protein Families:	Transmembrane



[View online »](#)

## Product images:



Host: Rabbit

Target Name: SLC35A5

Sample Type: MCF7 Cell Lysate

Antibody Dilution: 1.0µg/ml

Host: Rabbit

Target Name: SLC35A5

Sample Tissue: Human MCF7 Whole Cell lysates

Antibody Dilution: 1ug/ml