

Product datasheet for **TA362452**

PP4R1 (PPP4R1) Rabbit Polyclonal Antibody

Product data:

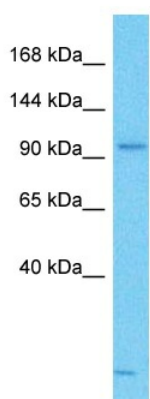
Product Type:	Primary Antibodies
Applications:	WB
Reactivity:	Human
Host:	Rabbit
Clonality:	Polyclonal
Immunogen:	The immunogen is a synthetic peptide directed towards the N terminal region of human PPP4R1
Specificity:	Expected reactivity: Human
Formulation:	Liquid. Purified antibody supplied in 1x PBS buffer with 0.09% (w/v) sodium azide and 2% sucrose. <i>Note that this product is shipped as lyophilized powder to China customers.</i>
Concentration:	lot specific
Purification:	Affinity purified
Conjugation:	Unconjugated
Storage:	For short term use, store at 2-8°C up to 1 week. For long term storage, store at -20°C in small aliquots to prevent freeze-thaw cycles.
Stability:	Shelf life: one year from despatch.
Predicted Protein Size:	107 kDa
Gene Name:	protein phosphatase 4 regulatory subunit 1
Database Link:	NP_001035847.1 Entrez Gene 9989 Human Q8TF05
Background:	This gene encodes one of several alternate regulatory subunits of serine/threonine protein phosphatase 4 (PP4). The protein features multiple HEAT repeats. This protein forms a complex with PP4RC. This complex may have a distinct role from other PP4 complexes, including regulation of HDAC3. There is also a transcribed pseudogene on chromosome 20. Alternative splicing results in multiple transcript variants.
Synonyms:	MEG1; PP4(Rmeg); PP4R1



[View online »](#)

Protein Families: Druggable Genome, Phosphatase

Product images:



Host: Rabbit
Target Name: PPP4R1
Sample Type: MCF7 Cell Lysate
Antibody Dilution: 1.0 μ g/ml

Host: Rabbit
Target Name: PPP4R1
Sample Tissue: Human MCF7 Whole Cell lysates
Antibody Dilution: 1 μ g/ml