

Product datasheet for **TA362445**

INTS5 Rabbit Polyclonal Antibody

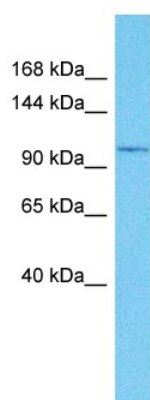
Product data:

Product Type:	Primary Antibodies
Applications:	WB
Reactivity:	Human
Host:	Rabbit
Clonality:	Polyclonal
Immunogen:	The immunogen is a synthetic peptide directed towards the C terminal region of human INTS5
Specificity:	Expected reactivity: Human
Formulation:	Liquid. Purified antibody supplied in 1x PBS buffer with 0.09% (w/v) sodium azide and 2% sucrose.
Concentration:	lot specific
Purification:	Affinity purified
Conjugation:	Unconjugated
Storage:	For short term use, store at 2-8°C up to 1 week. For long term storage, store at -20°C in small aliquots to prevent freeze-thaw cycles.
Stability:	Shelf life: one year from despatch.
Predicted Protein Size:	112 kDa
Gene Name:	integrator complex subunit 5
Database Link:	NP_085131.1 Entrez Gene 80789 Human Q6P9B9
Background:	INTS5 is a subunit of the Integrator complex, which associates with the C-terminal domain of RNA polymerase II large subunit and mediates 3-prime end processing of small nuclear RNAs U1 and U2.
Synonyms:	INT5; KIAA1698
Protein Families:	Druggable Genome



[View online »](#)

Product images:



Host: Rabbit
 Target Name: INTS5
 Sample Type: THP-1 Cell Lysate
 Antibody Dilution: 1.0µg/ml

Host: Rabbit
 Target Name: INTS5
 Sample Tissue: Human THP-1 Whole Cell lysates
 Antibody Dilution: 1ug/ml