

## Product datasheet for **TA362440**

### SPIN2A Rabbit Polyclonal Antibody

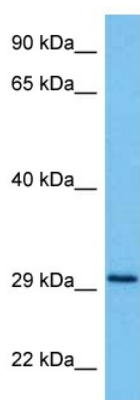
#### Product data:

Product Type:	Primary Antibodies
Applications:	WB
Reactivity:	Human
Host:	Rabbit
Clonality:	Polyclonal
Immunogen:	The immunogen is a synthetic peptide directed towards the N terminal region of human SPIN2A
Specificity:	<b>Expected reactivity:</b> Human
Formulation:	Liquid. Purified antibody supplied in 1x PBS buffer with 0.09% (w/v) sodium azide and 2% sucrose.
Concentration:	lot specific
Purification:	Affinity purified
Conjugation:	Unconjugated
Storage:	For short term use, store at 2-8°C up to 1 week. For long term storage, store at -20°C in small aliquots to prevent freeze-thaw cycles.
Stability:	Shelf life: one year from despatch.
Predicted Protein Size:	29 kDa
Gene Name:	spindlin family member 2A
Database Link:	<a href="#">NP_061876.3</a> <a href="#">Entrez Gene 54466 Human</a> <a href="#">Q99865</a>
Background:	This gene encodes one of three members of the DXF34 gene family, located in a 100-kb region of chromosome Xp11.21.
Synonyms:	dj323P24.1; DXF34; MGC88670; OTTHUMP00000024302; SPIN-2; SPIN-2A; SPIN2



[View online »](#)

## Product images:



Host: Rabbit  
Target Name: SPIN2A  
Sample Type: COLO205 Cell Lysate  
Antibody Dilution: 1.0µg/ml

Host: Rabbit  
Target Name: SPIN2A  
Sample Tissue: Human COLO205 Whole Cell lysates  
Antibody Dilution: 1ug/ml