

## Product datasheet for **TA362438**

### SLC35C2 Rabbit Polyclonal Antibody

#### Product data:

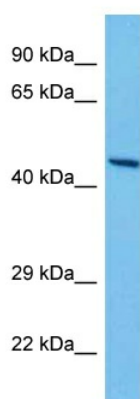
Product Type:	Primary Antibodies
Applications:	WB
Reactivity:	Human
Host:	Rabbit
Clonality:	Polyclonal
Immunogen:	The immunogen is a synthetic peptide directed towards the C terminal region of human SLC35C2
Specificity:	<b>Expected reactivity:</b> Human
Formulation:	Liquid. Purified antibody supplied in 1x PBS buffer with 0.09% (w/v) sodium azide and 2% sucrose. <i>Note that this product is shipped as lyophilized powder to China customers.</i>
Concentration:	lot specific
Purification:	Affinity purified
Conjugation:	Unconjugated
Storage:	For short term use, store at 2-8°C up to 1 week. For long term storage, store at -20°C in small aliquots to prevent freeze-thaw cycles.
Stability:	Shelf life: one year from despatch.
Predicted Protein Size:	43 kDa
Gene Name:	solute carrier family 35 member C2
Database Link:	<a href="#">NP_001268386.1</a> <a href="#">Entrez Gene 51006 Human</a> <a href="#">Q9NQQ7-3</a>
Background:	This gene encodes a member of the triose-phosphate transporter protein family. This gene is regulated by oxygen tension, is induced in hypoxic trophoblast cells, and is overexpressed in ovarian cancer. Alternative splicing results in multiple transcript variants. A pseudogene of this gene has been defined on the X chromosome.
Synonyms:	BA394O2.1; C20orf5; CGI-15; FLJ37039; FLJ46434; MGC20633; MGC32079; MGC39183; OTTHUMP00000031692; OVCOV1



[View online »](#)

Protein Families: Druggable Genome, Transmembrane

### Product images:



Host: Rabbit  
Target Name: SLC35C2  
Sample Type: PC-3 Cell Lysate  
Antibody Dilution: 1.0 $\mu$ g/ml

Host: Rabbit  
Target Name: SLC35C2  
Sample Tissue: Human PC-3 Whole Cell lysates  
Antibody Dilution: 1 $\mu$ g/ml