

Product datasheet for **TA362436**

KCTD17 Rabbit Polyclonal Antibody

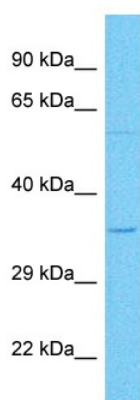
Product data:

| | |
|-------------------------|---|
| Product Type: | Primary Antibodies |
| Applications: | WB |
| Reactivity: | Human |
| Host: | Rabbit |
| Clonality: | Polyclonal |
| Immunogen: | The immunogen is a synthetic peptide directed towards the middle terminal region of human KCTD17 |
| Specificity: | Expected reactivity: Human |
| Formulation: | Liquid. Purified antibody supplied in 1x PBS buffer with 0.09% (w/v) sodium azide and 2% sucrose. <i>Note that this product is shipped as lyophilized powder to China customers.</i> |
| Concentration: | lot specific |
| Purification: | Affinity purified |
| Conjugation: | Unconjugated |
| Storage: | For short term use, store at 2-8°C up to 1 week. For long term storage, store at -20°C in small aliquots to prevent freeze-thaw cycles. |
| Stability: | Shelf life: one year from despatch. |
| Predicted Protein Size: | 35 kDa |
| Gene Name: | potassium channel tetramerization domain containing 17 |
| Database Link: | NP_001269613.1 Entrez Gene 79734 Human Q8N5Z5 |
| Background: | Is a positive regulator of ciliogenesis, playing a crucial role in the initial steps of axoneme extension. It acts as a substrate-adaptor for CUL3-RING ubiquitin ligase complexes which mediate the ubiquitination and subsequent proteasomal degradation of TCHP, a protein involved in ciliogenesis down-regulation. May be involved in endoplasmic reticulum calcium ion homeostasis. |
| Synonyms: | FLJ12242; FLJ98761 |



[View online »](#)

Product images:



Host: Rabbit
Target Name: KCTD17
Sample Type: 786-0 Cell Lysate
Antibody Dilution: 1.0 μ g/ml

Host: Rabbit
Target Name: KCTD17
Sample Tissue: Human 786-0 Whole Cell lysates
Antibody Dilution: 1 μ g/ml