

Product datasheet for **TA362432**

ZNF280D Rabbit Polyclonal Antibody

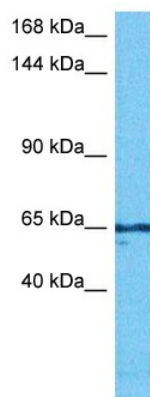
Product data:

Product Type:	Primary Antibodies
Applications:	WB
Reactivity:	Human
Host:	Rabbit
Clonality:	Polyclonal
Immunogen:	The immunogen is a synthetic peptide directed towards the middle terminal region of human ZNF280D
Specificity:	Expected reactivity: Human
Formulation:	Liquid. Purified antibody supplied in 1x PBS buffer with 0.09% (w/v) sodium azide and 2% sucrose.
Concentration:	lot specific
Purification:	Affinity purified
Conjugation:	Unconjugated
Storage:	For short term use, store at 2-8°C up to 1 week. For long term storage, store at -20°C in small aliquots to prevent freeze-thaw cycles.
Stability:	Shelf life: one year from despatch.
Predicted Protein Size:	65 kDa
Gene Name:	zinc finger protein 280D
Database Link:	NP_001002843.1 Entrez Gene 54816 Human Q6N043-3
Background:	May function as a transcription factor.
Synonyms:	FLJ20086; KIAA1584; MGC21637; MGC61687; SUHW4; ZNF634



[View online »](#)

Product images:



Host: Rabbit
Target Name: ZNF280D
Sample Type: PANC1 Cell Lysate
Antibody Dilution: 1.0 μ g/ml

Host: Rabbit
Target Name: ZNF280D
Sample Tissue: Human PANC1 Whole Cell lysates
Antibody Dilution: 1 μ g/ml