

Product datasheet for **TA362427**

MSTO1 Rabbit Polyclonal Antibody

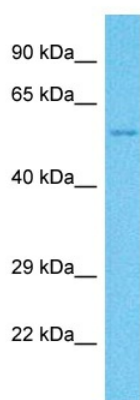
Product data:

| | |
|-------------------------|---|
| Product Type: | Primary Antibodies |
| Applications: | WB |
| Reactivity: | Human |
| Host: | Rabbit |
| Clonality: | Polyclonal |
| Immunogen: | The immunogen is a synthetic peptide directed towards the N terminal region of human MSTO1 |
| Specificity: | Expected reactivity: Human |
| Formulation: | Liquid. Purified antibody supplied in 1x PBS buffer with 0.09% (w/v) sodium azide and 2% sucrose. <i>Note that this product is shipped as lyophilized powder to China customers.</i> |
| Concentration: | lot specific |
| Purification: | Affinity purified |
| Conjugation: | Unconjugated |
| Storage: | For short term use, store at 2-8°C up to 1 week. For long term storage, store at -20°C in small aliquots to prevent freeze-thaw cycles. |
| Stability: | Shelf life: one year from despatch. |
| Predicted Protein Size: | 57 kDa |
| Gene Name: | misato 1, mitochondrial distribution and morphology regulator |
| Database Link: | NP_001243461.1 Entrez Gene 55154 Human Q9BUK6-7 |
| Background: | Involved in the regulation of mitochondrial distribution and morphology. |
| Synonyms: | DKFZp686B1757; DKFZp686I01261; FLJ10504; LST005; misato; MST; RP11-29H23.3 |



[View online »](#)

Product images:



Host: Rabbit
Target Name: MSTO1
Sample Type: HCT116 Cell Lysate
Antibody Dilution: 1.0 μ g/ml

Host: Rabbit
Target Name: MSTO1
Sample Tissue: Human HCT116 Whole Cell
lysates
Antibody Dilution: 1 μ g/ml