

Product datasheet for **TA362423**

YIPF4 Rabbit Polyclonal Antibody

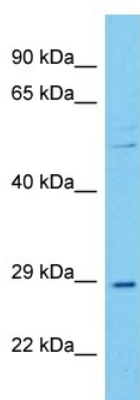
Product data:

Product Type:	Primary Antibodies
Applications:	WB
Reactivity:	Human
Host:	Rabbit
Clonality:	Polyclonal
Immunogen:	The immunogen is a synthetic peptide directed towards the middle region of human YIPF4
Specificity:	Expected reactivity: Human
Formulation:	Liquid. Purified antibody supplied in 1x PBS buffer with 0.09% (w/v) sodium azide and 2% sucrose. <i>Note that this product is shipped as lyophilized powder to China customers.</i>
Concentration:	lot specific
Purification:	Affinity purified
Conjugation:	Unconjugated
Storage:	For short term use, store at 2-8°C up to 1 week. For long term storage, store at -20°C in small aliquots to prevent freeze-thaw cycles.
Stability:	Shelf life: one year from despatch.
Predicted Protein Size:	26 kDa
Gene Name:	Yip1 domain family member 4
Database Link:	NP_115688.1 Entrez Gene 84272 Human Q9BSR8
Background:	Involved in the maintenance of the Golgi structure.
Synonyms:	FinGER4; MGC11061; Nbla11189
Protein Families:	Transmembrane



[View online »](#)

Product images:



Host: Rabbit
Target Name: YIPF4
Sample Type: COLO205 Cell Lysate
Antibody Dilution: 1.0 μ g/ml

Host: Rabbit
Target Name: YIPF4
Sample Tissue: Human COLO205 Whole Cell lysates
Antibody Dilution: 1 μ g/ml