

## Product datasheet for **TA362419**

### ZNF692 Rabbit Polyclonal Antibody

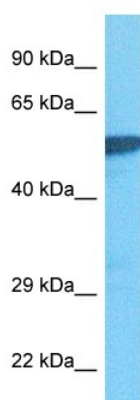
#### Product data:

Product Type:	Primary Antibodies
Applications:	WB
Reactivity:	Human
Host:	Rabbit
Clonality:	Polyclonal
Immunogen:	The immunogen is a synthetic peptide directed towards the middle terminal region of human ZNF692
Specificity:	<b>Expected reactivity:</b> Human
Formulation:	Liquid. Purified antibody supplied in 1x PBS buffer with 0.09% (w/v) sodium azide and 2% sucrose.
Concentration:	lot specific
Purification:	Affinity purified
Conjugation:	Unconjugated
Storage:	For short term use, store at 2-8°C up to 1 week. For long term storage, store at -20°C in small aliquots to prevent freeze-thaw cycles.
Stability:	Shelf life: one year from despatch.
Predicted Protein Size:	57 kDa
Gene Name:	zinc finger protein 692
Database Link:	<a href="#">NP_001129508.1</a> <a href="#">Entrez Gene 55657 Human</a> <a href="#">Q9BU19</a>
Background:	May be involved in transcriptional regulation.
Synonyms:	AREBP; FLJ20531; Zfp692



[View online »](#)

## Product images:



Host: Rabbit  
Target Name: ZNF692  
Sample Type: A549 Cell Lysate  
Antibody Dilution: 1.0µg/ml

Host: Rabbit  
Target Name: ZNF692  
Sample Tissue: Human A549 Whole Cell lysates  
Antibody Dilution: 1ug/ml