

## Product datasheet for **TA362415**

### KPC2 (UBAC1) Rabbit Polyclonal Antibody

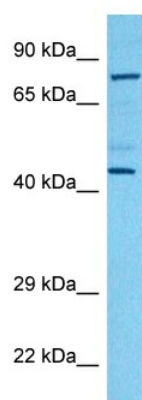
#### Product data:

|                         |  |
|-------------------------|--|
| Product Type:           | Primary Antibodies   |
| Applications:           | WB   |
| Reactivity:             | Human  |
| Host:                   | Rabbit   |
| Clonality:              | Polyclonal   |
| Immunogen:              | The immunogen is a synthetic peptide directed towards the C terminal region of human UBAC1   |
| Specificity:            | <b>Expected reactivity:</b> Human  |
| Formulation:            | Liquid. Purified antibody supplied in 1x PBS buffer with 0.09% (w/v) sodium azide and 2% sucrose.<br><i>Note that this product is shipped as lyophilized powder to China customers.</i>              |
| Concentration:          | lot specific   |
| Purification:           | Affinity purified  |
| Conjugation:            | Unconjugated   |
| Storage:                | For short term use, store at 2-8°C up to 1 week. For long term storage, store at -20°C in small aliquots to prevent freeze-thaw cycles.  |
| Stability:              | Shelf life: one year from despatch.  |
| Predicted Protein Size: | 44 kDa   |
| Gene Name:              | UBA domain containing 1  |
| Database Link:          | <a href="#">NP_057256.2</a><br><a href="#">Entrez Gene 10422 Human</a><br><a href="#">Q9BSL1</a>   |
| Background:             | Non-catalytic subunit of the KPC complex that acts as E3 ubiquitin-protein ligase. Required for poly-ubiquitination and proteasome-mediated degradation of CDKN1B during G1 phase of the cell cycle. |
| Synonyms:               | GBDR1; KPC2; RP11-432J22.3; UBADC1   |
| Protein Families:       | Druggable Genome   |



[View online »](#)

## Product images:



Host: Rabbit  
Target Name: UBAC1  
Sample Type: 293T Cell Lysate  
Antibody Dilution: 1.0 $\mu$ g/ml

Host: Rabbit  
Target Name: UBAC1  
Sample Tissue: Human 293T Whole Cell lysates  
Antibody Dilution: 1 $\mu$ g/ml