

Product datasheet for **TA362391**

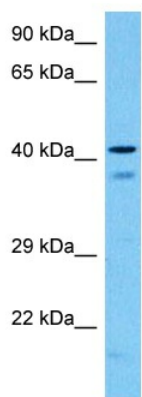
C17orf75 Rabbit Polyclonal Antibody

Product data:

Product Type:	Primary Antibodies
Applications:	WB
Reactivity:	Human
Host:	Rabbit
Clonality:	Polyclonal
Immunogen:	The immunogen is a synthetic peptide directed towards the N terminal region of human C17ORF75
Specificity:	Expected reactivity: Human
Formulation:	Liquid. Purified antibody supplied in 1x PBS buffer with 0.09% (w/v) sodium azide and 2% sucrose. <i>Note that this product is shipped as lyophilized powder to China customers.</i>
Concentration:	lot specific
Purification:	Affinity purified
Conjugation:	Unconjugated
Storage:	For short term use, store at 2-8°C up to 1 week. For long term storage, store at -20°C in small aliquots to prevent freeze-thaw cycles.
Stability:	Shelf life: one year from despatch.
Predicted Protein Size:	45 kDa
Gene Name:	chromosome 17 open reading frame 75
Database Link:	NP_071739.2 Entrez Gene 64149 Human Q9HAS0
Background:	May have a role in spermatogenesis.
Synonyms:	NJMU-R1
Protein Families:	Druggable Genome



[View online »](#)

Product images:

Host: Rabbit
Target Name: C17orf75
Sample Type: HT1080 Cell Lysate
Antibody Dilution: 1.0 μ g/ml

Host: Rabbit
Target Name: C17ORF75
Sample Tissue: Human HT1080 Whole Cell lysates
Antibody Dilution: 1 μ g/ml