

Product datasheet for **TA362387**

CDC37L1 Rabbit Polyclonal Antibody

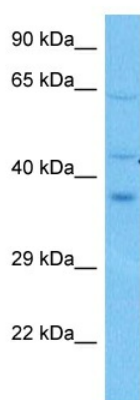
Product data:

Product Type:	Primary Antibodies
Applications:	WB
Reactivity:	Human
Host:	Rabbit
Clonality:	Polyclonal
Immunogen:	The immunogen is a synthetic peptide directed towards the middle region of human CDC37L1
Specificity:	Expected reactivity: Human
Formulation:	Liquid. Purified antibody supplied in 1x PBS buffer with 0.09% (w/v) sodium azide and 2% sucrose. <i>Note that this product is shipped as lyophilized powder to China customers.</i>
Concentration:	lot specific
Purification:	Affinity purified
Conjugation:	Unconjugated
Storage:	For short term use, store at 2-8°C up to 1 week. For long term storage, store at -20°C in small aliquots to prevent freeze-thaw cycles.
Stability:	Shelf life: one year from despatch.
Predicted Protein Size:	37 kDa
Gene Name:	cell division cycle 37 like 1
Database Link:	NP_060383.2 Entrez Gene 55664 Human Q7L3B6
Background:	CDC37L1 is a cytoplasmic phosphoprotein that exists in complex with HSP90 as well as several other proteins involved in HSP90-mediated protein folding.
Synonyms:	CDC37B; FLJ20639; HARC



[View online »](#)

Product images:



Host: Rabbit
Target Name: CDC37L1
Sample Type: HCT116 Cell Lysate
Antibody Dilution: 1.0 μ g/ml

Host: Rabbit
Target Name: CDC37L1
Sample Tissue: Human HCT116 Whole Cell
lysates
Antibody Dilution: 1 μ g/ml