

Product datasheet for **TA362386**

NDUFA8 Rabbit Polyclonal Antibody

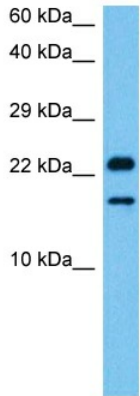
Product data:

Product Type:	Primary Antibodies
Applications:	WB
Reactivity:	Human
Host:	Rabbit
Clonality:	Polyclonal
Immunogen:	The immunogen is a synthetic peptide directed towards the middle region of human NDUFA8
Specificity:	Expected reactivity: Human
Formulation:	Liquid. Purified antibody supplied in 1x PBS buffer with 0.09% (w/v) sodium azide and 2% sucrose. <i>Note that this product is shipped as lyophilized powder to China customers.</i>
Concentration:	lot specific
Purification:	Affinity purified
Conjugation:	Unconjugated
Storage:	For short term use, store at 2-8°C up to 1 week. For long term storage, store at -20°C in small aliquots to prevent freeze-thaw cycles.
Stability:	Shelf life: one year from despatch.
Predicted Protein Size:	18 kDa
Gene Name:	NADH:ubiquinone oxidoreductase subunit A8
Database Link:	NP_055037.1 Entrez Gene 4702 Human P51970
Background:	The protein encoded by this gene belongs to the complex I 19 kDa subunit family. Mammalian complex I is composed of 45 different subunits. This protein has NADH dehydrogenase activity and oxidoreductase activity. It plays an important role in transferring electrons from NADH to the respiratory chain. The immediate electron acceptor for the enzyme is believed to be ubiquinone. Alternative splicing of this gene results in multiple transcript variants encoding different isoforms.
Synonyms:	CI-19KD; CI-PGIV; MGC793; PGIV



[View online »](#)

Protein Pathways: Alzheimer's disease, Huntington's disease, Metabolic pathways, Oxidative phosphorylation, Parkinson's disease

Product images:

Host: Rabbit
Target Name: NDUFA8
Sample Type: COLO205 Cell Lysate
Antibody Dilution: 1.0 μ g/ml

Host: Rabbit
Target Name: NDUFA8
Sample Tissue: Human COLO205 Whole Cell lysates
Antibody Dilution: 1 ug/ml