

Product datasheet for **TA362384**

C1RL Rabbit Polyclonal Antibody

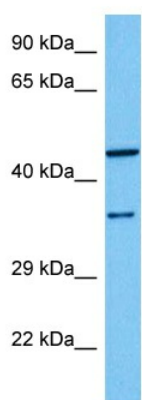
Product data:

Product Type:	Primary Antibodies
Applications:	WB
Reactivity:	Human
Host:	Rabbit
Clonality:	Polyclonal
Immunogen:	The immunogen is a synthetic peptide directed towards the middle region of human C1RL
Specificity:	Expected reactivity: Human
Formulation:	Liquid. Purified antibody supplied in 1x PBS buffer with 0.09% (w/v) sodium azide and 2% sucrose. <i>Note that this product is shipped as lyophilized powder to China customers.</i>
Concentration:	lot specific
Purification:	Affinity purified
Conjugation:	Unconjugated
Storage:	For short term use, store at 2-8°C up to 1 week. For long term storage, store at -20°C in small aliquots to prevent freeze-thaw cycles.
Stability:	Shelf life: one year from despatch.
Predicted Protein Size:	53 kDa
Gene Name:	complement C1r subcomponent like
Database Link:	NP_001284569.1 Entrez Gene 51279 Human Q9NZP8
Background:	Mediates the proteolytic cleavage of HP/haptoglobin in the endoplasmic reticulum.
Synonyms:	C1r-LP; C1RL1; C1RLP; CLSPa
Protein Families:	Druggable Genome, Protease



[View online »](#)

Product images:



Host: Rabbit
Target Name: C1RL
Sample Type: MCF7 Cell Lysate
Antibody Dilution: 1.0 μ g/ml

Host: Rabbit
Target Name: C1RL
Sample Tissue: Human MCF7 Whole Cell lysates
Antibody Dilution: 1 μ g/ml