

Product datasheet for **TA362382**

NCBP1 Rabbit Polyclonal Antibody

Product data:

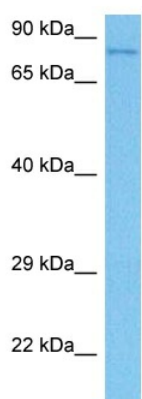
Product Type:	Primary Antibodies
Applications:	WB
Reactivity:	Human
Host:	Rabbit
Clonality:	Polyclonal
Immunogen:	The immunogen is a synthetic peptide directed towards the N terminal region of human NCBP1
Specificity:	Expected reactivity: Human
Formulation:	Liquid. Purified antibody supplied in 1x PBS buffer with 0.09% (w/v) sodium azide and 2% sucrose. <i>Note that this product is shipped as lyophilized powder to China customers.</i>
Concentration:	lot specific
Purification:	Affinity purified
Conjugation:	Unconjugated
Storage:	For short term use, store at 2-8°C up to 1 week. For long term storage, store at -20°C in small aliquots to prevent freeze-thaw cycles.
Stability:	Shelf life: one year from despatch.
Predicted Protein Size:	86 kDa
Gene Name:	nuclear cap binding protein subunit 1
Database Link:	NP_002477.1 Entrez Gene 4686 Human Q09161
Background:	The product of this gene is a component of the nuclear cap-binding protein complex (CBC), which binds to the monomethylated 5' cap of nascent pre-mRNA in the nucleoplasm. The encoded protein promotes high-affinity mRNA-cap binding and associates with the CTD of RNA polymerase II. The CBC promotes pre-mRNA splicing, 3'-end processing, RNA nuclear export, and nonsense-mediated mRNA decay.
Synonyms:	CBP80; MGC2087; NCBP



[View online »](#)

Protein Pathways: Spliceosome

Product images:



Host: Rabbit
Target Name: NCBP1
Sample Type: Jurkat Cell Lysate
Antibody Dilution: 1.0µg/ml

Host: Rabbit
Target Name: NCBP1
Sample Tissue: Human Jurkat Whole Cell lysates
Antibody Dilution: 1ug/ml