

## Product datasheet for **TA362379**

### BPNT2 Rabbit Polyclonal Antibody

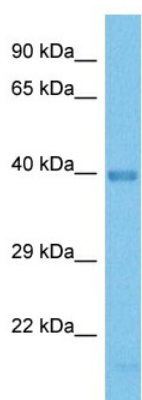
#### Product data:

Product Type:	Primary Antibodies
Applications:	WB
Reactivity:	Human
Host:	Rabbit
Clonality:	Polyclonal
Immunogen:	The immunogen is a synthetic peptide directed towards the middle region of human IMPAD1
Specificity:	<b>Expected reactivity:</b> Human
Formulation:	Liquid. Purified antibody supplied in 1x PBS buffer with 0.09% (w/v) sodium azide and 2% sucrose. <i>Note that this product is shipped as lyophilized powder to China customers.</i>
Concentration:	lot specific
Purification:	Affinity purified
Conjugation:	Unconjugated
Storage:	For short term use, store at 2-8°C up to 1 week. For long term storage, store at -20°C in small aliquots to prevent freeze-thaw cycles.
Stability:	Shelf life: one year from despatch.
Predicted Protein Size:	39 kDa
Gene Name:	inositol monophosphatase domain containing 1
Database Link:	<a href="#">NP_060283.3</a> <a href="#">Entrez Gene 54928 Human</a> <a href="#">Q9NX62</a>
Background:	This gene encodes a member of the inositol monophosphatase family. The encoded protein is localized to the Golgi apparatus and catalyzes the hydrolysis of phosphoadenosine phosphate (PAP) to adenosine monophosphate (AMP). Mutations in this gene are a cause of GRAPP type chondrodysplasia with joint dislocations, and a pseudogene of this gene is located on the long arm of chromosome 1.
Synonyms:	FLJ20421; IMPA3
Protein Families:	Transmembrane



[View online »](#)

## Product images:



Host: Rabbit  
Target Name: IMPAD1  
Sample Type: MCF7 Cell Lysate  
Antibody Dilution: 1.0 $\mu$ g/ml

Host: Rabbit  
Target Name: IMPAD1  
Sample Tissue: Human MCF7 Whole Cell lysates  
Antibody Dilution: 1ug/ml