

## Product datasheet for **TA362372**

### MyoGEF (PLEKHG6) Rabbit Polyclonal Antibody

#### Product data:

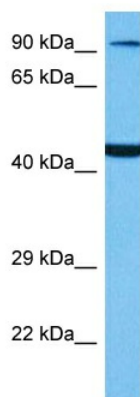
Product Type:	Primary Antibodies
Applications:	WB
Reactivity:	Human
Host:	Rabbit
Clonality:	Polyclonal
Immunogen:	The immunogen is a synthetic peptide directed towards the middle region of human PLEKHG6
Specificity:	<b>Expected reactivity:</b> Human
Formulation:	Liquid. Purified antibody supplied in 1x PBS buffer with 0.09% (w/v) sodium azide and 2% sucrose. <i>Note that this product is shipped as lyophilized powder to China customers.</i>
Concentration:	lot specific
Purification:	Affinity purified
Conjugation:	Unconjugated
Storage:	For short term use, store at 2-8°C up to 1 week. For long term storage, store at -20°C in small aliquots to prevent freeze-thaw cycles.
Stability:	Shelf life: one year from despatch.
Predicted Protein Size:	86 kDa
Gene Name:	pleckstrin homology and RhoGEF domain containing G6
Database Link:	<a href="#">NP_001138328.1</a> <a href="#">Entrez Gene 55200 Human</a> <a href="#">Q3KR16</a>
Background:	Guanine nucleotide exchange factor activating the small GTPase RHOA, which, in turn, induces myosin filament formation. Also activates RHOG. Does not activate RAC1, or to a much lower extent than RHOA and RHOG. Part of a functional unit, involving PLEKHG6, MYH10 and RHOA, at the cleavage furrow to advance furrow ingression during cytokinesis. In epithelial cells, required for the formation of microvilli and membrane ruffles on the apical pole. Along with EZR, required for normal macropinocytosis.



[View online »](#)

Synonyms: FLJ10665; MGC126315; MGC126353; MGC126354; MyoGEF

## Product images:



Host: Rabbit  
Target Name: PLEKHG6  
Sample Type: 293T Cell Lysate  
Antibody Dilution: 1.0µg/ml

Host: Rabbit  
Target Name: PLEKHG6  
Sample Tissue: Human 293T Whole Cell lysates  
Antibody Dilution: 1ug/ml