

Product datasheet for **TA362371**

Aftiphilin (AFTPH) Rabbit Polyclonal Antibody

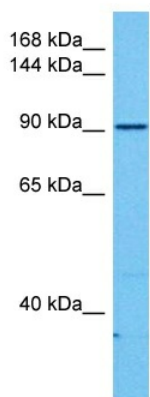
Product data:

Product Type:	Primary Antibodies
Applications:	WB
Reactivity:	Human
Host:	Rabbit
Clonality:	Polyclonal
Immunogen:	The immunogen is a synthetic peptide directed towards the N terminal region of human AFTPH
Specificity:	Expected reactivity: Human
Formulation:	Liquid. Purified antibody supplied in 1x PBS buffer with 0.09% (w/v) sodium azide and 2% sucrose. <i>Note that this product is shipped as lyophilized powder to China customers.</i>
Concentration:	lot specific
Purification:	Affinity purified
Conjugation:	Unconjugated
Storage:	For short term use, store at 2-8°C up to 1 week. For long term storage, store at -20°C in small aliquots to prevent freeze-thaw cycles.
Stability:	Shelf life: one year from despatch.
Predicted Protein Size:	90 kDa
Gene Name:	aftiphilin
Database Link:	NP_001002243.1 Entrez Gene 54812 Human Q6ULP2-3
Background:	May play a role in membrane trafficking.
Synonyms:	AFTH; aftiphilin; FLJ20080; FLJ23793; MGC33965; Nbla10388; OTTHUMP00000159936



[View online »](#)

Product images:



Host: Rabbit

Target Name: AFTPH

Sample Type: THP-1 Cell Lysate

Antibody Dilution: 1.0 μ g/ml

Host: Rabbit

Target Name: AFTPH

Sample Tissue: Human THP-1 Whole Cell lysates

Antibody Dilution: 1 μ g/ml