

Product datasheet for **TA362367**

LIMCH1 Rabbit Polyclonal Antibody

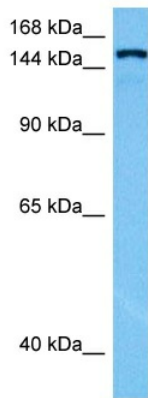
Product data:

Product Type:	Primary Antibodies
Applications:	WB
Reactivity:	Human
Host:	Rabbit
Clonality:	Polyclonal
Immunogen:	The immunogen is a synthetic peptide directed towards the middle region of human LIMCH1
Specificity:	Expected reactivity: Human
Formulation:	Liquid. Purified antibody supplied in 1x PBS buffer with 0.09% (w/v) sodium azide and 2% sucrose. <i>Note that this product is shipped as lyophilized powder to China customers.</i>
Concentration:	lot specific
Purification:	Affinity purified
Conjugation:	Unconjugated
Storage:	For short term use, store at 2-8°C up to 1 week. For long term storage, store at -20°C in small aliquots to prevent freeze-thaw cycles.
Stability:	Shelf life: one year from despatch.
Predicted Protein Size:	161 kDa
Gene Name:	LIM and calponin homology domains 1
Database Link:	NP_001106188.1 Entrez Gene 22998 Human Q9UPQ0-3
Background:	The function of this protein remains unknown.
Synonyms:	DKFZp434I0312; DKFZP686A01247; DKFZp686B2470; DKFZp686G2094; DKFZp686G18243; DKFZp781C1754; DKFZp781I1455; KIAA1102; LIMCH1A; LMO7B; MGC72127



[View online »](#)

Product images:



Host: Rabbit
Target Name: LIMCH1
Sample Type: HepG2 Cell Lysate
Antibody Dilution: 1.0 μ g/ml

Host: Rabbit
Target Name: LIMCH1
Sample Tissue: Human HepG2 Whole Cell lysates
Antibody Dilution: 1 μ g/ml