

Product datasheet for **TA362365**

KCNG2 Rabbit Polyclonal Antibody

Product data:

Product Type:	Primary Antibodies
Applications:	WB
Reactivity:	Human
Host:	Rabbit
Clonality:	Polyclonal
Immunogen:	The immunogen is a synthetic peptide directed towards the C terminal region of human KCNG2
Specificity:	Expected reactivity: Human
Formulation:	Liquid. Purified antibody supplied in 1x PBS buffer with 0.09% (w/v) sodium azide and 2% sucrose. <i>Note that this product is shipped as lyophilized powder to China customers.</i>
Concentration:	lot specific
Purification:	Affinity purified
Conjugation:	Unconjugated
Storage:	For short term use, store at 2-8°C up to 1 week. For long term storage, store at -20°C in small aliquots to prevent freeze-thaw cycles.
Stability:	Shelf life: one year from despatch.
Predicted Protein Size:	51 kDa
Gene Name:	potassium voltage-gated channel modifier subfamily G member 2
Database Link:	NP_036415.1 Entrez Gene 26251 Human Q9UJ96



[View online »](#)

Background:

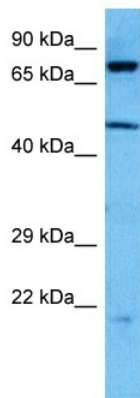
Voltage-gated potassium (Kv) channels represent the most complex class of voltage-gated ion channels from both functional and structural standpoints. Their diverse functions include regulating neurotransmitter release, heart rate, insulin secretion, neuronal excitability, epithelial electrolyte transport, smooth muscle contraction, and cell volume. This gene encodes a member of the potassium channel, voltage-gated, subfamily G. This member is a gamma subunit of the voltage-gated potassium channel. The delayed-rectifier type channels containing this subunit may contribute to cardiac action potential repolarization.

Synonyms:

KCNF2; Kv6.2

Protein Families:

Druggable Genome, Ion Channels: Potassium, Transmembrane

Product images:

Host: Rabbit
Target Name: KCNG2
Sample Type: HT1080 Cell Lysate
Antibody Dilution: 1.0µg/ml

Host: Rabbit
Target Name: KCNG2
Sample Tissue: Human HT1080 Whole Cell lysates
Antibody Dilution: 1 µg/ml