

Product datasheet for **TA362360**

SSR3 Rabbit Polyclonal Antibody

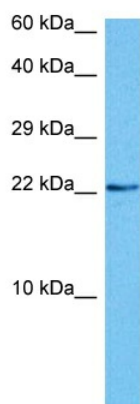
Product data:

Product Type:	Primary Antibodies
Applications:	WB
Reactivity:	Human
Host:	Rabbit
Clonality:	Polyclonal
Immunogen:	The immunogen is a synthetic peptide directed towards the middle region of human SSR3
Specificity:	Expected reactivity: Human
Formulation:	Liquid. Purified antibody supplied in 1x PBS buffer with 0.09% (w/v) sodium azide and 2% sucrose.
Concentration:	lot specific
Purification:	Affinity purified
Conjugation:	Unconjugated
Storage:	For short term use, store at 2-8°C up to 1 week. For long term storage, store at -20°C in small aliquots to prevent freeze-thaw cycles.
Stability:	Shelf life: one year from despatch.
Predicted Protein Size:	21 kDa
Gene Name:	signal sequence receptor subunit 3
Database Link:	NP_001295126.1 Entrez Gene 6747 Human Q9UNL2-2
Background:	The signal sequence receptor (SSR) is a glycosylated endoplasmic reticulum (ER) membrane receptor associated with protein translocation across the ER membrane. The SSR is comprised of four membrane proteins/subunits: alpha, beta, gamma, and delta. The first two are glycosylated subunits and the latter two are non-glycosylated subunits. This gene encodes the gamma subunit, which is predicted to span the membrane four times.
Synonyms:	SSR-gamma; TRAP-gamma; TRAPG



[View online »](#)

Product images:



Host: Rabbit
Target Name: SSR3
Sample Type: PC-3 Cell Lysate
Antibody Dilution: 1.0µg/ml

Host: Rabbit
Target Name: SSR3
Sample Tissue: Human PC-3 Whole Cell lysates
Antibody Dilution: 1ug/ml