

Product datasheet for **TA362357**

CROP (LUC7L3) Rabbit Polyclonal Antibody

Product data:

Product Type:	Primary Antibodies
Applications:	WB
Reactivity:	Human
Host:	Rabbit
Clonality:	Polyclonal
Immunogen:	The immunogen is a synthetic peptide directed towards the middle terminal region of human LUC7L3
Specificity:	Expected reactivity: Human
Formulation:	Liquid. Purified antibody supplied in 1x PBS buffer with 0.09% (w/v) sodium azide and 2% sucrose. <i>Note that this product is shipped as lyophilized powder to China customers.</i>
Concentration:	lot specific
Purification:	Affinity purified
Conjugation:	Unconjugated
Storage:	For short term use, store at 2-8°C up to 1 week. For long term storage, store at -20°C in small aliquots to prevent freeze-thaw cycles.
Stability:	Shelf life: one year from despatch.
Predicted Protein Size:	47 kDa
Gene Name:	LUC7 like 3 pre-mRNA splicing factor
Database Link:	NP_006098.2 Entrez Gene 51747 Human O95232
Background:	This gene encodes a protein with an N-terminal half that contains cysteine/histidine motifs and leucine zipper-like repeats, and the C-terminal half is rich in arginine and glutamate residues (RE domain) and arginine and serine residues (RS domain). This protein localizes with a speckled pattern in the nucleus, and could be involved in the formation of spliceosome via the RE and RS domains. Two alternatively spliced transcript variants encoding the same protein have been found for this gene.

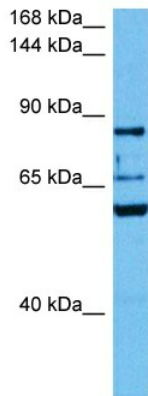


[View online »](#)

Synonyms: CRA; CREAP-1; CROP; hLuc7A; LUC7A; OA48-18

Protein Families: Stem cell - Pluripotency

Product images:



Host: Rabbit
Target Name: LUC7L3
Sample Type: ACHN Cell Lysate
Antibody Dilution: 1.0 μ g/ml

Host: Rabbit
Target Name: LUC7L3
Sample Tissue: Human ACHN Whole Cell lysates
Antibody Dilution: 1 μ g/ml