

Product datasheet for **TA362355**

ENTPD6 Rabbit Polyclonal Antibody

Product data:

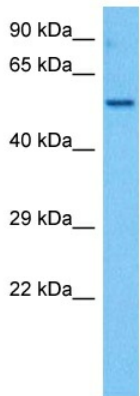
Product Type:	Primary Antibodies
Applications:	WB
Reactivity:	Human
Host:	Rabbit
Clonality:	Polyclonal
Immunogen:	The immunogen is a synthetic peptide directed towards the middle region of human ENTPD6
Specificity:	Expected reactivity: Human
Formulation:	Liquid. Purified antibody supplied in 1x PBS buffer with 0.09% (w/v) sodium azide and 2% sucrose. <i>Note that this product is shipped as lyophilized powder to China customers.</i>
Concentration:	lot specific
Purification:	Affinity purified
Conjugation:	Unconjugated
Storage:	For short term use, store at 2-8°C up to 1 week. For long term storage, store at -20°C in small aliquots to prevent freeze-thaw cycles.
Stability:	Shelf life: one year from despatch.
Predicted Protein Size:	53 kDa
Gene Name:	ectonucleoside triphosphate diphosphohydrolase 6 (putative)
Database Link:	NP_001107561.1 Entrez Gene 955 Human O75354
Background:	ENTPD6 is similar to E-type nucleotidases (NTPases). NTPases, such as CD39, mediate catabolism of extracellular nucleotides. ENTPD6 contains 4 apyrase-conserved regions which are characteristic of NTPases. Alternative splicing results in multiple transcript variants encoding different isoforms.
Synonyms:	CD39L2; dJ738P15.3; DKFZp781G2277; DKFZp781K21102; FLJ36711; IL-6SAG; IL6ST2; NTPDase-6
Protein Families:	Secreted Protein, Transmembrane



[View online »](#)

Protein Pathways: Purine metabolism, Pyrimidine metabolism

Product images:



Host: Rabbit
Target Name: ENTPD6
Sample Type: HT1080 Cell Lysate
Antibody Dilution: 1.0 μ g/ml

Host: Rabbit
Target Name: ENTPD6
Sample Tissue: Human HT1080 Whole Cell lysates
Antibody Dilution: 1 μ g/ml