

## Product datasheet for **TA362338**

### **SFRS11 (SRSF11) Rabbit Polyclonal Antibody**

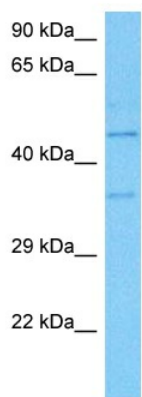
#### **Product data:**

Product Type:	Primary Antibodies
Applications:	WB
Reactivity:	Human
Host:	Rabbit
Clonality:	Polyclonal
Immunogen:	The immunogen is a synthetic peptide directed towards the middle region of human SRSF11
Specificity:	<b>Expected reactivity:</b> Human
Formulation:	Liquid. Purified antibody supplied in 1x PBS buffer with 0.09% (w/v) sodium azide and 2% sucrose.
Concentration:	lot specific
Purification:	Affinity purified
Conjugation:	Unconjugated
Storage:	For short term use, store at 2-8°C up to 1 week. For long term storage, store at -20°C in small aliquots to prevent freeze-thaw cycles.
Stability:	Shelf life: one year from despatch.
Predicted Protein Size:	53 kDa
Gene Name:	serine/arginine-rich splicing factor 11
Database Link:	<a href="#">NP_001177916.1</a> <a href="#">Entrez Gene 9295 Human</a> <a href="#">Q05519</a>
Background:	This gene encodes 54-kD nuclear protein that contains an arginine/serine-rich region similar to segments found in pre-mRNA splicing factors. Although the function of this protein is not yet known, structure and immunolocalization data suggest that it may play a role in pre-mRNA processing. Alternative splicing results in multiple transcript variants encoding different proteins. In addition, a pseudogene of this gene has been found on chromosome 12.
Synonyms:	0610009J05Rik; 2610019N13Rik; BF642805; Sfrs11



[View online »](#)

**Product images:**



Host: Rabbit  
 Target Name: SRSF11  
 Sample Type: OVCAR-3 Cell Lysate  
 Antibody Dilution: 1.0µg/ml

Host: Rabbit  
 Target Name: SRSF11  
 Sample Tissue: Human OVCAR-3 Whole Cell lysates  
 Antibody Dilution: 1 ug/ml