

Product datasheet for **TA362336**

FAM62A (ESYT1) Rabbit Polyclonal Antibody

Product data:

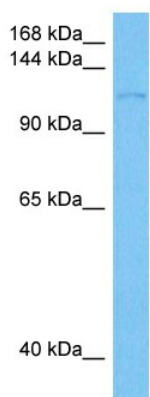
Product Type:	Primary Antibodies
Applications:	WB
Reactivity:	Human
Host:	Rabbit
Clonality:	Polyclonal
Immunogen:	The immunogen is a synthetic peptide directed towards the middle region of human ESYT1
Specificity:	Expected reactivity: Human
Formulation:	Liquid. Purified antibody supplied in 1x PBS buffer with 0.09% (w/v) sodium azide and 2% sucrose. <i>Note that this product is shipped as lyophilized powder to China customers.</i>
Concentration:	lot specific
Purification:	Affinity purified
Conjugation:	Unconjugated
Storage:	For short term use, store at 2-8°C up to 1 week. For long term storage, store at -20°C in small aliquots to prevent freeze-thaw cycles.
Stability:	Shelf life: one year from despatch.
Predicted Protein Size:	121 kDa
Gene Name:	extended synaptotagmin protein 1
Database Link:	NP_001171725.1 Entrez Gene 23344 Human Q9BSJ8
Background:	Binds glycerophospholipids in a barrel-like domain and may play a role in cellular lipid transport (By similarity). Binds calcium (via the C2 domains) and translocates to sites of contact between the endoplasmic reticulum and the cell membrane in response to increased cytosolic calcium levels. Helps tether the endoplasmic reticulum to the cell membrane and promotes the formation of appositions between the endoplasmic reticulum and the cell membrane.
Synonyms:	E-Syt1; FAM62A; KIAA0747; MBC2



[View online »](#)

Protein Families: Druggable Genome, Transmembrane

Product images:



Host: Rabbit
Target Name: ESYT1
Sample Type: HeLa Cell Lysate
Antibody Dilution: 1.0 μ g/ml

Host: Rabbit
Target Name: ESYT1
Sample Tissue: Human HeLa Whole Cell lysates
Antibody Dilution: 1 μ g/ml