

Product datasheet for **TA362326**

SLD5 (GINS4) Rabbit Polyclonal Antibody

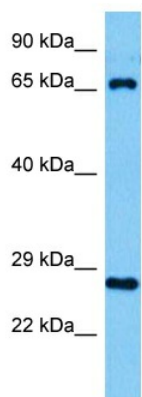
Product data:

Product Type:	Primary Antibodies
Applications:	WB
Reactivity:	Human
Host:	Rabbit
Clonality:	Polyclonal
Immunogen:	The immunogen is a synthetic peptide directed towards the middle region of human GINS4
Specificity:	Expected reactivity: Human
Formulation:	Liquid. Purified antibody supplied in 1x PBS buffer with 0.09% (w/v) sodium azide and 2% sucrose. <i>Note that this product is shipped as lyophilized powder to China customers.</i>
Concentration:	lot specific
Purification:	Affinity purified
Conjugation:	Unconjugated
Storage:	For short term use, store at 2-8°C up to 1 week. For long term storage, store at -20°C in small aliquots to prevent freeze-thaw cycles.
Stability:	Shelf life: one year from despatch.
Predicted Protein Size:	26 kDa
Gene Name:	GINS complex subunit 4
Database Link:	NP_115712.1 Entrez Gene 84296 Human Q9BRT9
Background:	The yeast heterotetrameric GINS complex is made up of Sld5, Psf1, Psf2, and Psf3. The formation of the GINS complex is essential for the initiation of DNA replication in yeast and Xenopus egg extracts . See GINS1 for additional information about the GINS complex.
Synonyms:	MGC14799; SLD5



[View online »](#)

Product images:



Host: Rabbit
Target Name: GINS4
Sample Type: 786-0 Cell Lysate
Antibody Dilution: 1.0 μ g/ml

Host: Rabbit
Target Name: GINS4
Sample Tissue: Human 786-0 Whole Cell lysates
Antibody Dilution: 1 μ g/ml