

Product datasheet for **TA362318**

LUC7L Rabbit Polyclonal Antibody

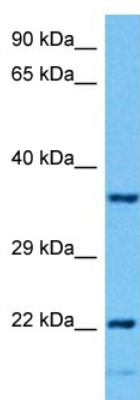
Product data:

Product Type:	Primary Antibodies
Applications:	WB
Reactivity:	Human
Host:	Rabbit
Clonality:	Polyclonal
Immunogen:	The immunogen is a synthetic peptide directed towards the middle region of Human LUC7L
Specificity:	Expected reactivity: Human
Formulation:	Liquid. Purified antibody supplied in 1x PBS buffer with 0.09% (w/v) sodium azide and 2% sucrose. <i>Note that this product is shipped as lyophilized powder to China customers.</i>
Concentration:	lot specific
Purification:	Affinity purified
Conjugation:	Unconjugated
Storage:	For short term use, store at 2-8°C up to 1 week. For long term storage, store at -20°C in small aliquots to prevent freeze-thaw cycles.
Stability:	Shelf life: one year from despatch.
Predicted Protein Size:	35 kDa
Gene Name:	LUC7 like
Database Link:	NP_060502.1 Entrez Gene 55692 Human Q9NQ29-2
Background:	The LUC7L gene may represent a mammalian heterochromatic gene, encoding a putative RNA-binding protein similar to the yeast Luc7p subunit of the U1 snRNP splicing complex that is normally required for 5-prime splice site selection.
Synonyms:	FLJ10231; hLuc7B1; LUC7-LIKE; LUC7B1; LUC7L1; OTTHUMP00000067166; SR+89



[View online »](#)

Product images:



Host: Rabbit
Target Name: LUC7L
Sample Type: HCT116 Cell Lysate
Antibody Dilution: 1.0 μ g/ml

Host: Rabbit
Target Name: LUC7L
Sample Tissue: Human HCT116 Whole Cell lysates
Antibody Dilution: 1 μ g/ml