

## Product datasheet for **TA362316**

### ARHGAP17 Rabbit Polyclonal Antibody

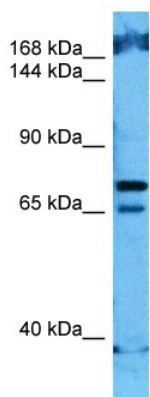
#### Product data:

Product Type:	Primary Antibodies
Applications:	WB
Reactivity:	Human
Host:	Rabbit
Clonality:	Polyclonal
Immunogen:	The immunogen is a synthetic peptide directed towards the middle region of human ARHGAP17
Specificity:	<b>Expected reactivity:</b> Human
Formulation:	Liquid. Purified antibody supplied in 1x PBS buffer with 0.09% (w/v) sodium azide and 2% sucrose. <i>Note that this product is shipped as lyophilized powder to China customers.</i>
Concentration:	lot specific
Purification:	Affinity purified
Conjugation:	Unconjugated
Storage:	For short term use, store at 2-8°C up to 1 week. For long term storage, store at -20°C in small aliquots to prevent freeze-thaw cycles.
Stability:	Shelf life: one year from despatch.
Predicted Protein Size:	66 kDa
Gene Name:	Rho GTPase activating protein 17
Database Link:	<a href="#">NP_001006635.1</a> <a href="#">Entrez Gene 55114 Human</a> <a href="#">Q68EM7-3</a>
Background:	RICH1 is a GTPase-activating protein (GAP). GAPs stimulate the intrinsic GTP hydrolysis of small G proteins, such as RHOA, RAC1, and CDC42.
Synonyms:	DKFZp564A1363; FLJ10308; FLJ13219; FLJ37567; FLJ43368; MGC87805; MST066; MST110; MSTP038; MSTP066; MSTP110; NADRIN; PP367; PP4534; RICH-1; RICH1; RICH1B; WBP15
Protein Families:	Druggable Genome



[View online »](#)

## Product images:



Host: Rabbit  
Target Name: ARHGAP17  
Sample Type: PC-3 Cell Lysate  
Antibody Dilution: 1.0 $\mu$ g/ml

Host: Rabbit  
Target Name: ARHGAP17  
Sample Tissue: Human PC-3 Whole Cell lysates  
Antibody Dilution: 1 $\mu$ g/ml