

## Product datasheet for **TA362314**

### IPP 2 (PPP1R2) Rabbit Polyclonal Antibody

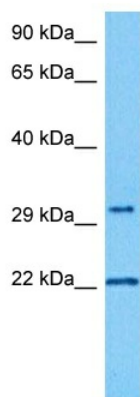
#### Product data:

Product Type:	Primary Antibodies
Applications:	WB
Reactivity:	Human
Host:	Rabbit
Clonality:	Polyclonal
Immunogen:	The immunogen is a synthetic peptide directed towards the middle region of human PPP1R2
Specificity:	<b>Expected reactivity:</b> Human
Formulation:	Liquid. Purified antibody supplied in 1x PBS buffer with 0.09% (w/v) sodium azide and 2% sucrose. <i>Note that this product is shipped as lyophilized powder to China customers.</i>
Concentration:	lot specific
Purification:	Affinity purified
Conjugation:	Unconjugated
Storage:	For short term use, store at 2-8°C up to 1 week. For long term storage, store at -20°C in small aliquots to prevent freeze-thaw cycles.
Stability:	Shelf life: one year from despatch.
Predicted Protein Size:	22 kDa
Gene Name:	protein phosphatase 1 regulatory inhibitor subunit 2
Database Link:	<a href="#">NP_001303254.1</a> <a href="#">Entrez Gene 5504 Human</a> <a href="#">P41236</a>
Background:	Protein phosphatase-1 (PP1) is one of the main eukaryotic serine/threonine phosphatases. The protein encoded by this gene binds to the catalytic subunit of PP1, strongly inhibiting its activity. Ten related pseudogenes have been found throughout the human genome. Several splice variants encoding different isoforms have been found for this gene.
Synonyms:	IPP-2; IPP2; MGC87148



[View online »](#)

## Product images:



Host: Rabbit  
Target Name: PPP1R2  
Sample Type: 786-0 Cell Lysate  
Antibody Dilution: 1.0 $\mu$ g/ml

Host: Rabbit  
Target Name: PPP1R2  
Sample Tissue: Human 786-0 Whole Cell lysates  
Antibody Dilution: 1  $\mu$ g/ml