

Product datasheet for **TA362310**

CYP20A1 Rabbit Polyclonal Antibody

Product data:

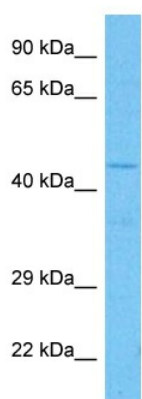
Product Type:	Primary Antibodies
Applications:	WB
Reactivity:	Human
Host:	Rabbit
Clonality:	Polyclonal
Immunogen:	The immunogen is a synthetic peptide directed towards the N terminal region of Human CYP20A1
Specificity:	Expected reactivity: Human
Formulation:	Liquid. Purified antibody supplied in 1x PBS buffer with 0.09% (w/v) sodium azide and 2% sucrose. <i>Note that this product is shipped as lyophilized powder to China customers.</i>
Concentration:	lot specific
Purification:	Affinity purified
Conjugation:	Unconjugated
Storage:	For short term use, store at 2-8°C up to 1 week. For long term storage, store at -20°C in small aliquots to prevent freeze-thaw cycles.
Stability:	Shelf life: one year from despatch.
Predicted Protein Size:	47 kDa
Gene Name:	cytochrome P450 family 20 subfamily A member 1
Database Link:	NP_803882.1 Entrez Gene 57404 Human Q6UW02-2
Background:	This gene encodes a member of the cytochrome P450 superfamily of enzymes. The cytochrome P450 proteins are monooxygenases that catalyze many reactions involved in drug metabolism and synthesis of cholesterol, steroids and other lipids. This protein lacks one amino acid of the conserved heme binding site. It also lacks the conserved I-helix motif AGX(D,E)T, suggesting that its substrate may carry its own oxygen.
Synonyms:	CYP-M; MGC22229; OTTHUMP00000206151



[View online >](#)

Protein Families: Druggable Genome, P450, Transmembrane

Product images:



Host: Rabbit
Target Name: CYP20A1
Sample Type: 293T Cell Lysate
Antibody Dilution: 1.0 μ g/ml

Host: Rabbit
Target Name: CYP20A1
Sample Tissue: Human 293T Whole Cell lysates
Antibody Dilution: 1 μ g/ml