

Product datasheet for **TA362309**

ARPP21 Rabbit Polyclonal Antibody

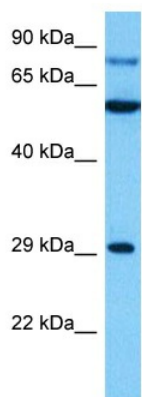
Product data:

Product Type:	Primary Antibodies
Applications:	WB
Reactivity:	Human
Host:	Rabbit
Clonality:	Polyclonal
Immunogen:	The immunogen is a synthetic peptide directed towards the N terminal region of human ARPP21
Specificity:	Expected reactivity: Human
Formulation:	Liquid. Purified antibody supplied in 1x PBS buffer with 0.09% (w/v) sodium azide and 2% sucrose. <i>Note that this product is shipped as lyophilized powder to China customers.</i>
Concentration:	lot specific
Purification:	Affinity purified
Conjugation:	Unconjugated
Storage:	For short term use, store at 2-8°C up to 1 week. For long term storage, store at -20°C in small aliquots to prevent freeze-thaw cycles.
Stability:	Shelf life: one year from despatch.
Predicted Protein Size:	89 kDa
Gene Name:	cAMP regulated phosphoprotein 21kDa
Database Link:	NP_001020239.1 Entrez Gene 10777 Human Q9UBL0
Background:	This gene encodes a cAMP-regulated phosphoprotein. The encoded protein is enriched in the caudate nucleus and cerebellar cortex. A similar protein in mouse may be involved in regulating the effects of dopamine in the basal ganglia. Alternate splicing results in multiple transcript variants.
Synonyms:	0710001E13Rik; AI853636; ARPP-21; Arpp-21; D9Bwg1012e; Ppp1r1c; Ppp1r1cl; R3hdm3; RGD1307208; RGD1307215; Tarpp



[View online >](#)

Product images:



Host: Rabbit
Target Name: ARPP21
Sample Type: HT1080 Cell Lysate
Antibody Dilution: 1.0 μ g/ml

Host: Rabbit
Target Name: ARPP21
Sample Tissue: Human HT1080 Whole Cell lysates
Antibody Dilution: 1 μ g/ml