

Product datasheet for **TA362308**

FAM3A Rabbit Polyclonal Antibody

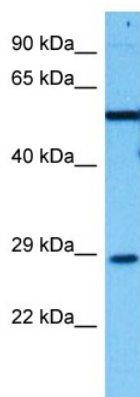
Product data:

Product Type:	Primary Antibodies
Applications:	WB
Reactivity:	Human
Host:	Rabbit
Clonality:	Polyclonal
Immunogen:	The immunogen is a synthetic peptide directed towards the C terminal region of human FAM3A
Specificity:	Expected reactivity: Human
Formulation:	Liquid. Purified antibody supplied in 1x PBS buffer with 0.09% (w/v) sodium azide and 2% sucrose. <i>Note that this product is shipped as lyophilized powder to China customers.</i>
Concentration:	lot specific
Purification:	Affinity purified
Conjugation:	Unconjugated
Storage:	For short term use, store at 2-8°C up to 1 week. For long term storage, store at -20°C in small aliquots to prevent freeze-thaw cycles.
Stability:	Shelf life: one year from despatch.
Predicted Protein Size:	25 kDa
Gene Name:	family with sequence similarity 3 member A
Database Link:	NP_001164603.1 Entrez Gene 60343 Human P98173
Background:	This gene encodes a cytokine-like protein. The expression of this gene may be regulated by peroxisome proliferator-activated receptor gamma, and the encoded protein may be involved in the regulation of glucose and lipid metabolism. Alternative splicing results in multiple transcript variants.
Synonyms:	2-19; 2.19; DXS560S; OTTHUMP00000015419; XAP-7
Protein Families:	Secreted Protein, Transmembrane



[View online »](#)

Product images:



Host: Rabbit
Target Name: FAM3A
Sample Type: HT1080 Cell Lysate
Antibody Dilution: 1.0 μ g/ml

Host: Rabbit
Target Name: FAM3A
Sample Tissue: Human HT1080 Whole Cell lysates
Antibody Dilution: 1 μ g/ml