

Product datasheet for **TA362307**

NCAPG2 Rabbit Polyclonal Antibody

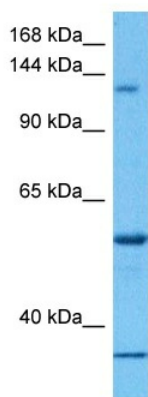
Product data:

Product Type:	Primary Antibodies
Applications:	WB
Reactivity:	Human
Host:	Rabbit
Clonality:	Polyclonal
Immunogen:	The immunogen is a synthetic peptide directed towards the middle region of human NCAPG2
Specificity:	Expected reactivity: Human
Formulation:	Liquid. Purified antibody supplied in 1x PBS buffer with 0.09% (w/v) sodium azide and 2% sucrose.
Concentration:	lot specific
Purification:	Affinity purified
Conjugation:	Unconjugated
Storage:	For short term use, store at 2-8°C up to 1 week. For long term storage, store at -20°C in small aliquots to prevent freeze-thaw cycles.
Stability:	Shelf life: one year from despatch.
Predicted Protein Size:	125 kDa
Gene Name:	non-SMC condensin II complex subunit G2
Database Link:	NP_001268861.1 Entrez Gene 54892 Human Q86XI2
Background:	This gene encodes a protein that belongs to the Condensin2nSMC family of proteins. The encoded protein is a regulatory subunit of the condensin II complex which, along with the condensin I complex, plays a role in chromosome assembly and segregation during mitosis. A similar protein in mouse is required for early development of the embryo. Alternate splicing results in multiple transcript variants.
Synonyms:	CAP-G2; FLJ20311; hCAP-G2; LUZP5; MTB; OTTHUMP00000202110



[View online »](#)

Product images:



Host: Rabbit
Target Name: NCAPG2
Sample Type: OVCAR-3 Cell Lysate
Antibody Dilution: 1.0µg/ml

Host: Rabbit
Target Name: NCAPG2
Sample Tissue: Human OVCAR-3 Whole Cell lysates
Antibody Dilution: 1ug/ml