

## Product datasheet for **TA362304**

### YIF1A Rabbit Polyclonal Antibody

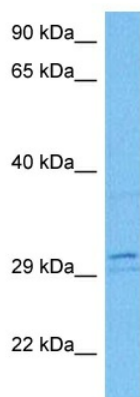
#### Product data:

Product Type:	Primary Antibodies
Applications:	WB
Reactivity:	Human
Host:	Rabbit
Clonality:	Polyclonal
Immunogen:	The immunogen is a synthetic peptide directed towards the N terminal region of human YIF1A
Specificity:	<b>Expected reactivity:</b> Human
Formulation:	Liquid. Purified antibody supplied in 1x PBS buffer with 0.09% (w/v) sodium azide and 2% sucrose.
Concentration:	lot specific
Purification:	Affinity purified
Conjugation:	Unconjugated
Storage:	For short term use, store at 2-8°C up to 1 week. For long term storage, store at -20°C in small aliquots to prevent freeze-thaw cycles.
Stability:	Shelf life: one year from despatch.
Predicted Protein Size:	32 kDa
Gene Name:	Yip1 interacting factor homolog A, membrane trafficking protein
Database Link:	<a href="#">NP_065203.2</a> <a href="#">Entrez Gene 10897 Human</a> <a href="#">O95070</a>
Background:	Possible role in transport between endoplasmic reticulum and Golgi.
Synonyms:	54TM; 54TMp; FinGER7; HYIF1P; YIF1; YIF1P
Protein Families:	Transmembrane



[View online »](#)

## Product images:



Host: Rabbit  
Target Name: YIF1A  
Sample Type: K562 Cell Lysate  
Antibody Dilution: 1.0 $\mu$ g/ml

Host: Rabbit  
Target Name: YIF1A  
Sample Tissue: Human K562 Whole Cell lysates  
Antibody Dilution: 1 ug/ml